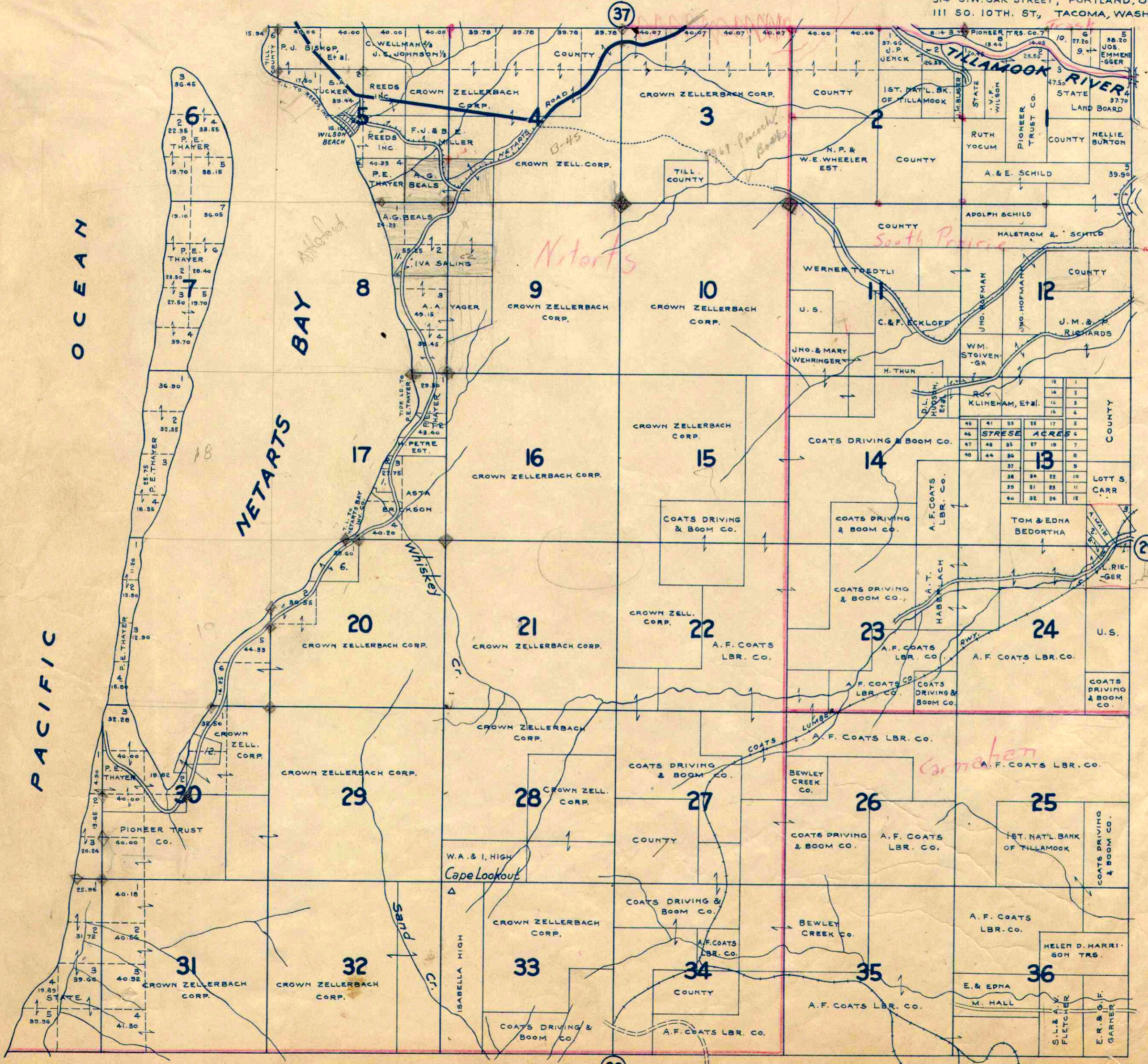


# TOWNSHIP 2 S., RANGES 10 & 11 W.W.M. TILLAMOOK COUNTY ORE.

SCALE 2 IN. = 1 MILE

CHAS. F. METSKER CIVIL ENGINEER  
514 S.W. OAK STREET, PORTLAND, ORE.  
111 SO. 10TH. ST., TACOMA, WASH.



- 1- W.M. C. & O. RIEDELL
- 2- JOE E. GOOSIC
- 3- L. S. CARR
- 4- T. & E. BEDORTHA
- 5- COATS DRIV. & BOOM CO.
- 6- NETARTS BAY INV. CO.
- 7- EMIL E. JOSSY
- 8- FRANK R. JONES
- 9- V. & M. EMMENEGGER
- 10- GEO. D. RIECHERS
- 11- W. R. COATS
- 12- M. & E. GARRISON

- STRESE ACRES -

1-2-3- RUTH L. EATON  
5-6-7- W.T. DERR  
36- C. B. ARTHUR  
41- ETHEL H. BOOTH  
Bel. to COUNTY

STRESE	ACRES
45	1
46	2
47	3
48	4
49	5
50	6
51	7
52	8
53	9
54	10
55	11
56	12
57	13
58	14
59	15
60	16

**LEGEND**

- PAVED ROADS
- IMPROVED DIRT ROADS
- OTHER ROADS
- TRAILS
- RAILROADS
- ELE. RWYS.
- SCHOOLS